



21 Back Lane South Wheldrake

York, YO19 6DT

**Guide Price £750,000**





A FABULOUS 5 BEDROOM DETACHED HOUSE SET IN LARGER THAN AVERAGE GARDENS WITH OPEN ASPECT TO FRONT IN ONE OF WHELDRAKES MOST SOUGHT AFTER POSITIONS. Within the catchment for Fulford school and with easy access into York and on to the A64 this popular commuter village has good local facilities. The property provides bright and spacious living accommodation with the benefit of gas central heating and double glazing and comprises entrance hall, cloaks/w.c., large sitting room, family room, dining room, breakfast kitchen, utility room, landing, master bedroom with en suite shower room, 3 further double bedrooms and single bedroom/office, family bathroom/w.c. Large front garden with driveway and double brick garage. Good sized lawned rear garden. An internal viewing is strongly recommended.

**Entrance Hall**

**Sitting Room**

20'4" x 12'10" (6.20m x 3.91m)

**Dining Room**

12'7" x 9'1" (3.84m x 2.77m)

**Family room**

12'7" x 12'7" (3.84m x 3.84m)

**Kitchen/Breakfast Room**

14'6" x 13' (4.42m x 3.96m)

**Utility Room**

13' x 5'7" (3.96m x 1.70m)

**Cloakroom/WC**

5'11" x 2'11" (1.80m x 0.89m)

**Landing**

**Bedroom 1**

14'3" x 12'4" (4.34m x 3.76m)

**En-suite**

8'7" x 6'3" (2.62m x 1.91m)

**Bedroom 2**

13' x 11'8" (3.96m x 3.56m)







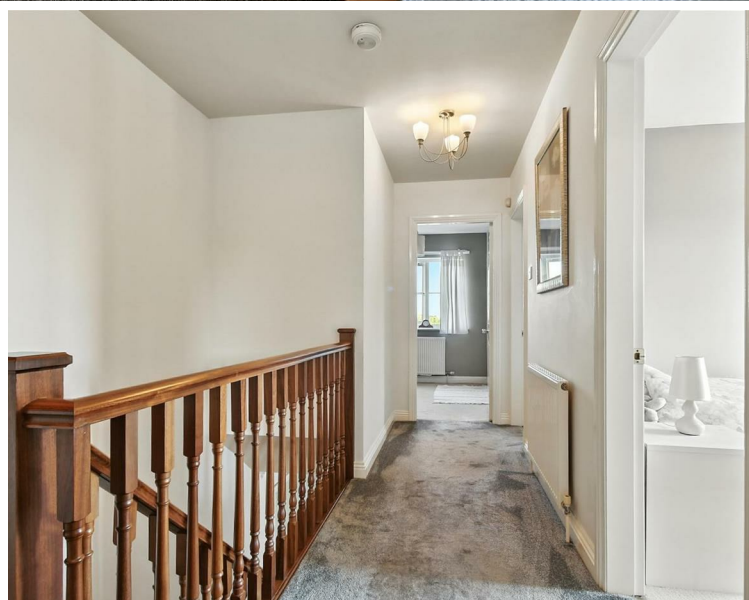
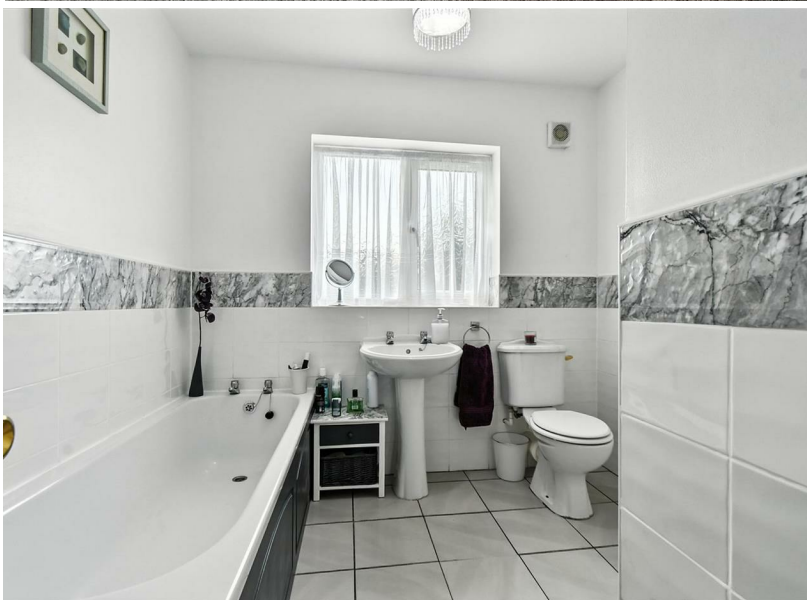
**Bedroom 3**  
12'7" x 12' (3.84m x 3.66m)

**Bedroom 4**  
12'7" x 9'7" (3.84m x 2.92m)

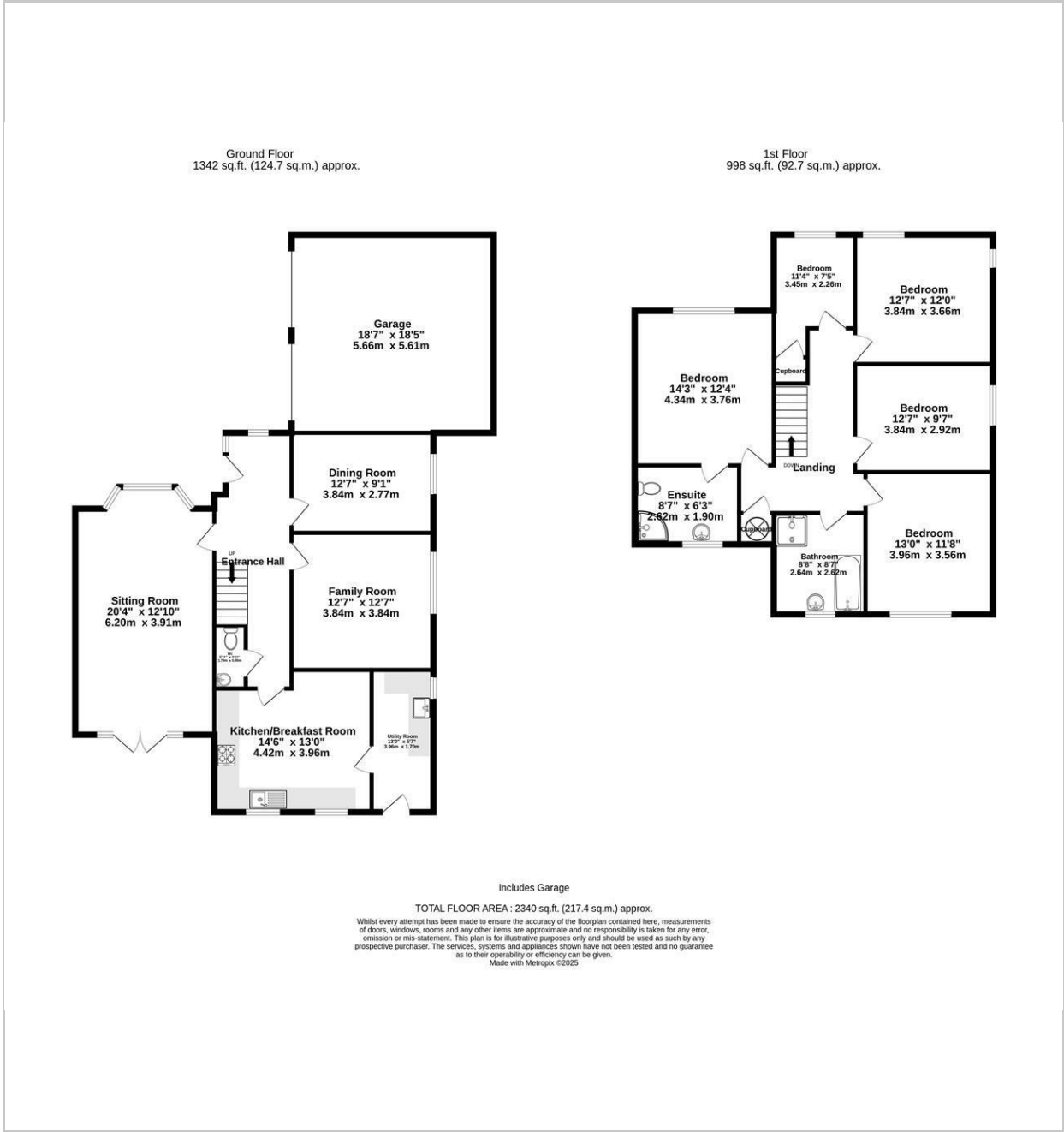
**Bedroom 5**  
11'4" x 7'5" (3.45m x 2.26m)

**House Bathroom**  
8'8" x 8'7" (2.64m x 2.62m)

**Garage**  
18'7" x 18'5" (5.66m x 5.61m)



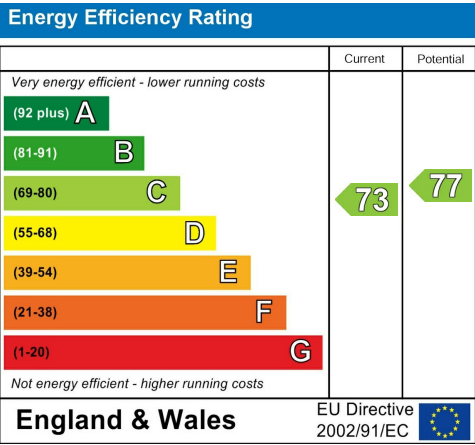
FLOOR PLAN



LOCATION



EPC



These particulars, whilst believed to be accurate are set out as a general outline only for guidance and do not constitute any part of an offer or contract. Intending purchasers should not rely on them as statements of representation of fact, but must satisfy themselves by inspection or otherwise as to their accuracy. No person in this firms employment has the authority to make or give any representation or warranty in respect of the property.